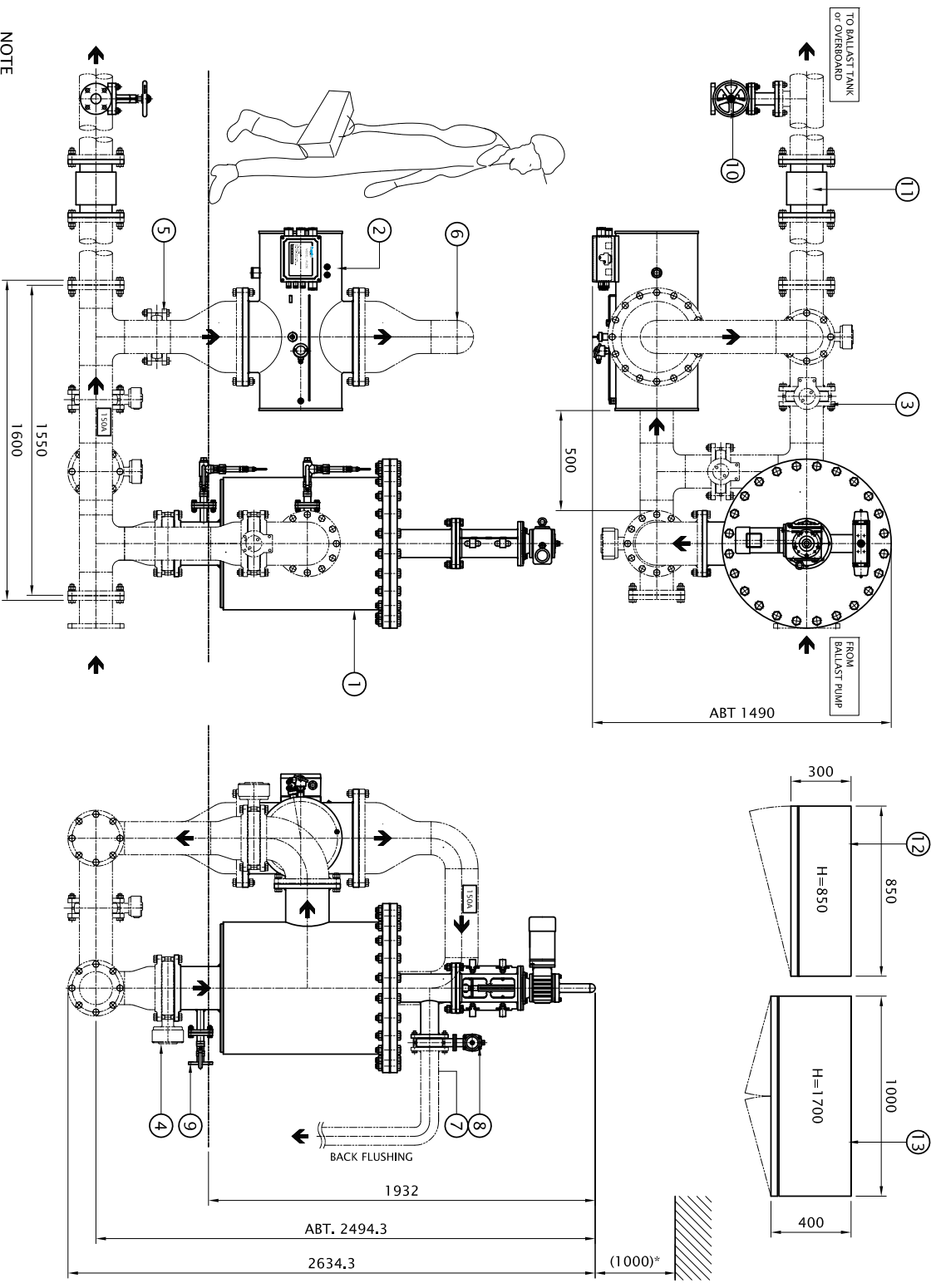


REV.	DATE	REASON
Δ	-	-
Δ	-	-

CloEn-Patrol™ Ballast System

Model : CloEn-P150

(Installation ex. 1)



※ Specification

Capacity : 150 m³/h
 Filtration degree : 50 micron
 Fluid : ballast water
 Power supply : 380/440VAC
 3phase 60Hz

13	BWMS BALLAST PANEL	1	SS400				
12	BWMS CONTROL PANEL	1	SS400				
11	FLOW METER	1	-				
10	SAMPLING VALVE(10K 50A)	1	SUS316				
9	DRAIN VALVE	1	SUS316				
8	BACK FLUSHING V/V	1	FC				
7	PIPE 80A	1	SS400				YARD SUPPLY
6	PIPE 150A	1	SS400				YARD SUPPLY
5	FLOW CONTROL V/V(10K 150A)	1	FC				YARD SUPPLY
4	AUTO BUTTERFLY V/V(10K200A)	2	FC				YARD SUPPLY
3	AUTO BUTTERFLY V/V(10K150A)	2	FC				YARD SUPPLY
2	UV UNIT(UV250)	1	SUS316				
1	FILTER UNIT(FP250)	1	SS400				

NO.	DESCRIPTION	QTY	MATL	REMARK
SCALE	ANGLE	UNIT	DRAWN	CHK'D
N/S	3rd	mm	20101210	C.S.PARK
PROJECT	REFERENCE	TITLE	DATE	APPR
		Layout of	20101210	
		CloEn-P150		

NOTE
 * Sampling valve must installed discharge line, as near to the point of discharge as practicable, during ballast water discharge whenever possible